

## Members Matter

Mississippi County Electric Cooperative (MCEC) and its wholesale energy provider, Arkansas Electric Cooperative Corporation (AECC), were founded by visionary Arkansas electric cooperative members to ensure that electric cooperative members would have access to reliable and affordable power. The electric cooperative pioneers formed MCEC because the quality of life and future of electric cooperative members depended on them.

Although energy policies, demographics and governmental regulations have changed in the past six decades, one thing has remained constant - MCEC's continued commitment to its members. As a member-owned and member-driven organization, the policies and decisions made by MCEC have one focus: Members Matter.

Across Arkansas, 17 locally owned member distribution cooperatives provide electricity to approximately 500,000 homes, farms and businesses in Arkansas and surrounding states. These members account for approximately 1.2 million residents in the state of Arkansas, representing almost every community and spanning the geographic footprint of Arkansas' mountains, valleys, rivers, streams and farmland.

## Strategic Vision

Since its founding, MCEC has utilized a consistent, long-term, strategic vision to ensure that members have access to reliable electric service at a reasonable price in a responsible manner. MCEC works to ensure members have access to the most economical electric service possible through AECC, which has a diverse generation portfolio that includes coal, natural gas, hydroelectric assets and long-term power purchase agreements that include wind, solar and biomass energy sources. Decisions by the MCEC board of directors and leadership team are based on the ultimate short-term and long-term benefits to Arkansas electric cooperative members.

## Service

MCEC and the state's other 16 electric distribution cooperatives assist the communities they serve by not only delivering power to businesses, farms and homes across Arkansas, but by helping to grow their communities through economic development efforts and supporting the business expansions and community initiatives. The cooperatives sponsor community fundraising, development and service events while employees devote hundreds of volunteer hours to projects. Electric cooperative directors and employees know that strong communities coupled with reliable, affordable electric service provide the fuel for economic growth and a sustained quality of life. MCEC directors and employees serve as advocates for our communities and our members by constantly striving to assist Arkansans in every possible manner.

## We are Arkansas

As members of 17 distinct electric cooperatives across the state, Arkansas' more than 1.2 million electric cooperative members are more than just customers. They own their local electric cooperative. As part of the structure of democratically controlled cooperatives, member directors have a vote in policy decisions and the electric cooperative leaders answer directly to their members.

Collectively, Arkansas' electric cooperatives represent the largest private business in Arkansas. This success has been powered by board members and employees who understand and implement the membership structure and philosophical vision that electric utility cooperatives exist wholly to serve their members. This mission and structure is the essence and lifeblood of the electric cooperative business model and community. Employees and members are also friends and neighbors. At MCEC members matter because that is who we are, We are Arkansas.

## Your Board of Directors and Officers

**Robert Earl Davis**  
*Chairman*

**Neil M. Burge**  
*Vice Chairman*

**Diana Holmes**  
*Secretary-Treasurer*

**Charles E. Brown**  
*Director*

**David D. Wildy**  
*Director*

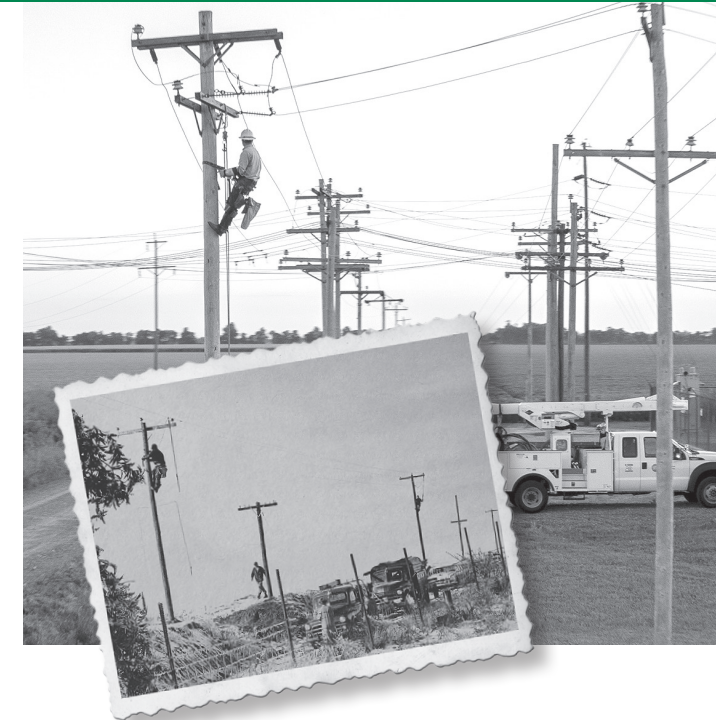


**Mississippi County Electric Cooperative, Inc.**

A Touchstone Energy® Cooperative 

*Authorized provider of  
WildBlue Satellite Speed Internet Service*

510 North Broadway, P.O. Box 7  
Blytheville, Arkansas 72316  
870-763-4563 or 800-439-4563



# A POWERFUL HISTORY OF POWERING YOUR FUTURE.



**Mississippi County Electric Cooperative, Inc.**

## Condensed Operating Statement

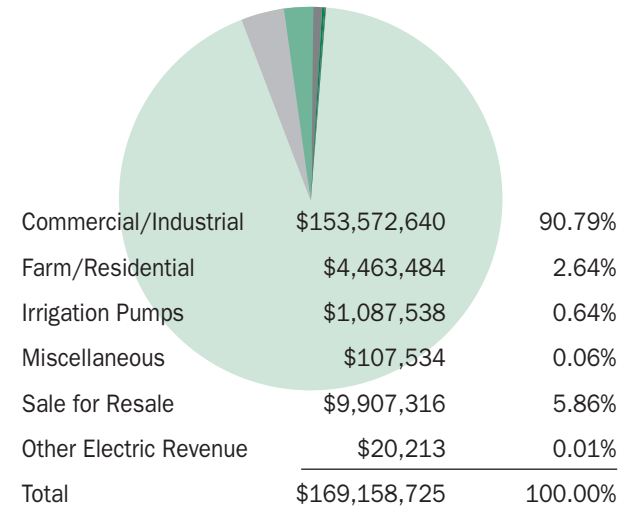
	<u>2018</u>	<u>2017</u>
Operating Revenues	\$169,158,725	\$158,738,748
Power Cost	\$159,582,696	\$150,802,414
Operations and Maintenance	\$4,349,155	\$4,259,361
Depreciation	\$1,763,318	\$1,661,630
Interest and Other Deductions	\$556,189	\$620,051
Total Expenses	<u>\$166,251,358</u>	<u>\$157,343,456</u>
Margins from Operations	\$2,907,367	\$1,395,292
Non-Operating Margins	\$3,138,063	\$2,763,194
Net Margins	<u>\$6,045,430</u>	<u>\$4,158,486</u>

## Condensed Balance Sheet

<b>Assets</b>	<u>2018</u>	<u>2017</u>
Electric Plant	\$57,605,026	\$56,193,959
Less Accumulated Depreciation	\$13,999,542	\$13,129,916
Net Utility Plant	\$43,605,484	\$43,064,043
Current Assets	\$22,209,871	\$21,002,363
Other Assets	\$39,419,615	\$39,098,426
Total Assets	<u>\$105,234,970</u>	<u>\$103,164,832</u>
<b>Liability and Members' Equity</b>		
Members' Equity	\$76,129,660	\$71,922,004
Long-Term Debt	\$12,025,108	\$12,982,499
Current Liabilities	\$14,208,167	\$15,009,373
Other Liabilities	\$2,872,035	\$3,250,956
Total Liabilities and Members' Equity	<u>\$105,234,970</u>	<u>\$103,164,832</u>

## Revenue Dollar 2018

### How It Was Earned



### How It Was Used

